

Needled Carpets

Supplementary Instructions for the Installation of FINDEISEN Needled Carpet Lines featuring Pattern Repeats

These instructions are a supplement to the latest issue of the installation instructions for “Findeisen Needled Carpet Lines”. All instructions given therein are also authoritative for the installation of material featuring pattern repeats.

The below instructions apply to the installation of the following FINDEISEN carpets:

– **FINETT CLASSICO**

– **FINETT QUATTRO**

Pattern repeat means a continuously repeated pattern. Needled carpet lines featuring pattern repeats must be installed so that the patterns are matching. This also applies to adjoining smaller lines (strips joined on).

The uniformity of the colour of the needled carpet lines is only guaranteed with identical lot numbers (manufacture). Lines of one and the same lot are marked by identical lot numbers.

Minor commercial colour variations may occur in every lot. The carpet lines must always be installed in the ascending order of their numbers indicated in the delivery note, even if the sequence of numbers is not continuous.

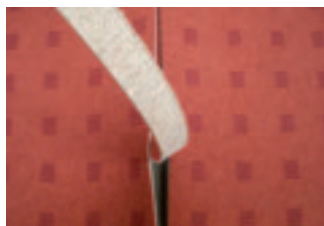
The carpets should always be installed from the middle of the room to its sides.

Before installation/gluing, all the required needled carpet lines should be completely rolled out and checked to see whether the overall picture is correct. Minor colour variations due to production have to be accepted.

Once the installation is finished, complaints of colour variations shall no longer be accepted.

Always keep the length and width repeats specified in the product data sheets/sample cards and roll labels. To do so, round up each line measurement to the full length repeat. For a room length of 3.20 m, a length repeat of e. g. 50 cm requires the material to be cut to 3.50 m.

The **seam cut** has to be made according to the **dual-cut method** before the carpet is glued.



For this, overlap the lines by approx. 3 - 5 cm, with identical pattern repeats. Cut the carpet edges lying on top of each other in one single operation along a metal rule. Seam cuts in the adhesive bed are not considered to be executed according to the technical rules and so is the joining together of the original edges.

Adhesives of the lowest emission class that are free of high-boiling solvents and have a highly shear-resistant glue joint (value $> 2 \text{ N/mm}^2$, test acc. to DIN EN 14293) should be used for our carpets.

A list of suitable adhesives is available on request.

Important Note:

When the respective building regulation list comes into effect, but from January 1, 2011 at the latest, FINDEISEN needed carpets must only be glued by adhesives that have a "General Approval" (abZ) of the "Deutsches Institut für Bauaufsicht (DIBt) [German Site Supervision Authority]".

When the material is glued, make sure that the entire surface of the bottom side of the needed carpet line is coated by adhesive; replace the trowel notching in good time so as to ensure sufficient coating. Strictly adhere to the flash-off and setting times as well as the adhesive consumption figures specified by the adhesive producers and suppliers. When the carpet has been laid out in the adhesive bed, it must be thoroughly rolled over with a min. 50 kg sectional roller. The entire surface, particularly the area around the seams, must then be rolled over once more.

Use adequate **seam clamps** to secure the area around the seam edges in some places, if necessary:



In no case, must the seam edges be rubbed on (e.g. by means of a hammer or a comparable tool). This would produce light stripes marking the seam area. Pattern or repeat distortions due to production within the admissible tolerances cannot be avoided.

These pattern or repeat distortions have to be stretched and/or corrected by means of suitable tools. Without these tools such installations are practically impossible.

Minor distortions in the area of the seam edges can easily be corrected by means of a **knee kicker**.



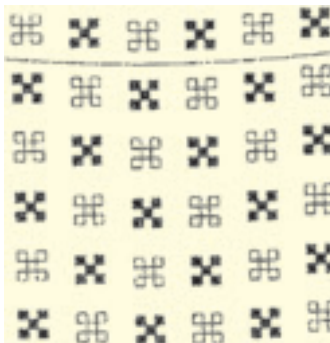
Major distortions have to be stretched and/or corrected using a **double-headed stretcher**:



The floorer is obligated to stretch pattern distortions. Nevertheless, it is recommended to agree with the client beforehand on the tolerable post-installation/gluing pattern distortions. For this, you may refer to the latest technical rule “Post-Installation Pattern Variations in Textile Floor Coverings” of the “Bundesverband der vereidigten Sachverständigen für Raum und Ausstattung e. V.” (BSR), D-53177 Bonn.

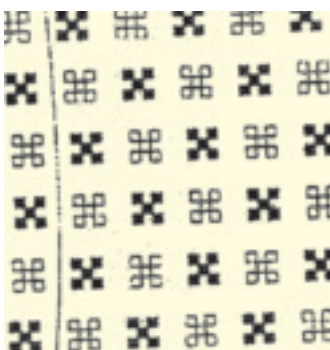
According to this technical rule, the following tolerances are admissible in one carpet line:

- Cross bow distortion: maximum 0.5 % of the line width



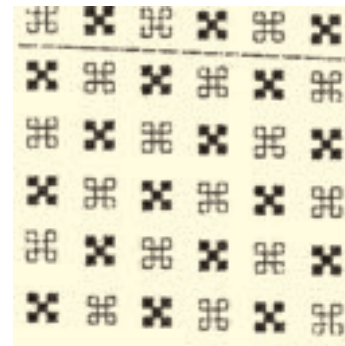
Cross bow distortion

- Longitudinal bow distortion: no difference admitted. Longitudinal bow distortions can always be stretched.



Longitudinal bow distortion

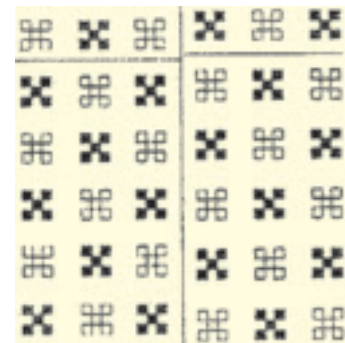
- Skew: maximum 0.5 % of the line width



Skew

Between two lines, VOB Part C DIN 18 365 “Floor Covering Work” allow pattern distortions of maximum 0.35 %.

- Pattern distortion



Pattern distortion

This means that for a line 10 m long, the admissible repeat variation is 3.5 cm! So, every trained and experienced installer can be expected to make up for and/or equalize a needed line from the centre of the line, on one side, to 5 m = 1.75 cm; for a line of a length of 10 m that means a repeat variation of $2 \times 1.75 = 3.5$ cm.

In case of bigger variations, the installer must stop working and contact the manufacturer of the needed carpet. The same applies, when a distortion cannot be equalized, thereby preventing satisfactory installation.

In no case the installer can, after installation, refer to having received distorted material with incorrect pattern repeats.

According to VOB DIN 18 365, part C, patterned lines must be installed so that the patterns are matching.

In this context, pattern match means that, considering the type and nature of the repeats, the pattern repeats must go together as defined in the agreement made between customer and contractor and/or is possible with observance of the technical rule "Post-Installation Pattern Variations in Textile Floor Coverings".

Printing: June 2010

Revision B